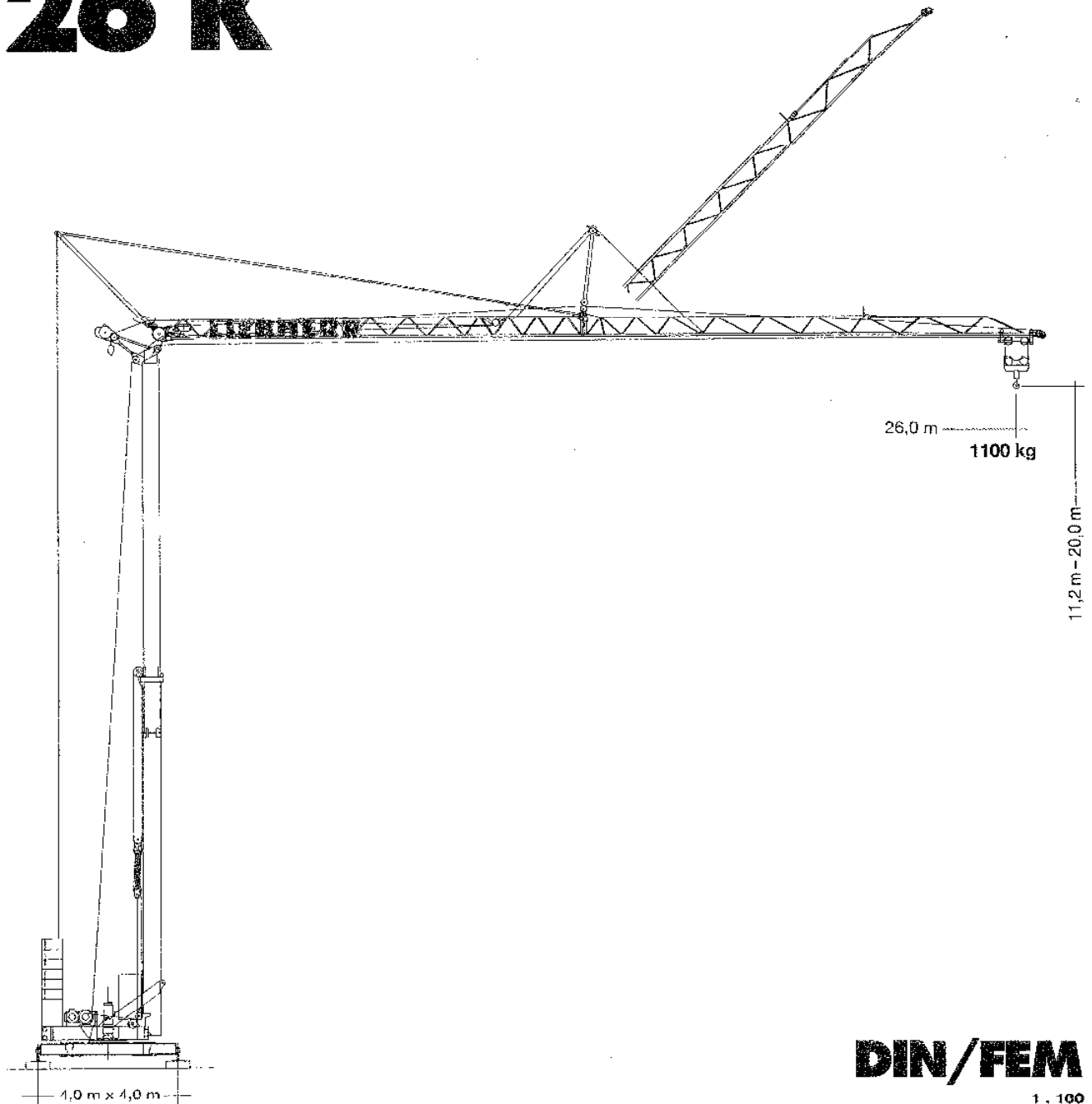


**Tower Crane / Grue à tour / Gru a torre
Grúa torre / Guindaste de torre**

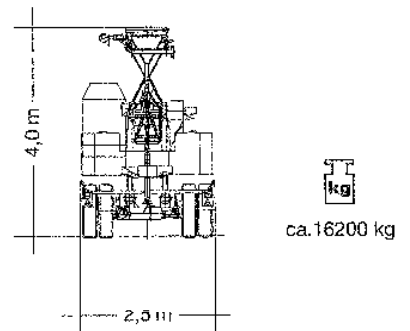
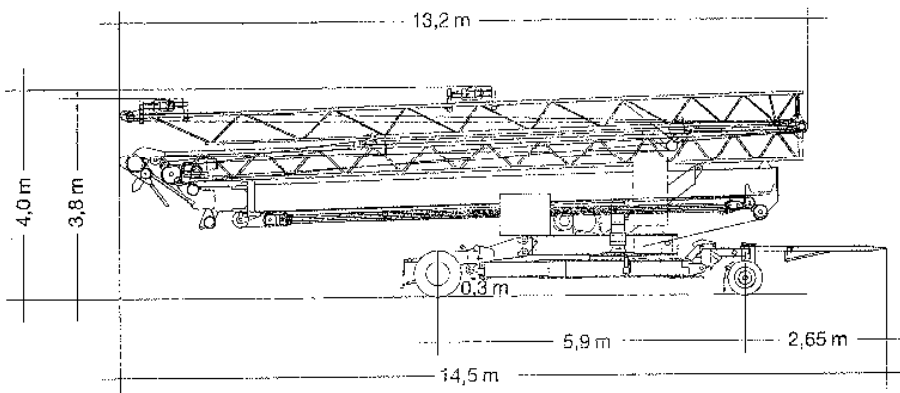
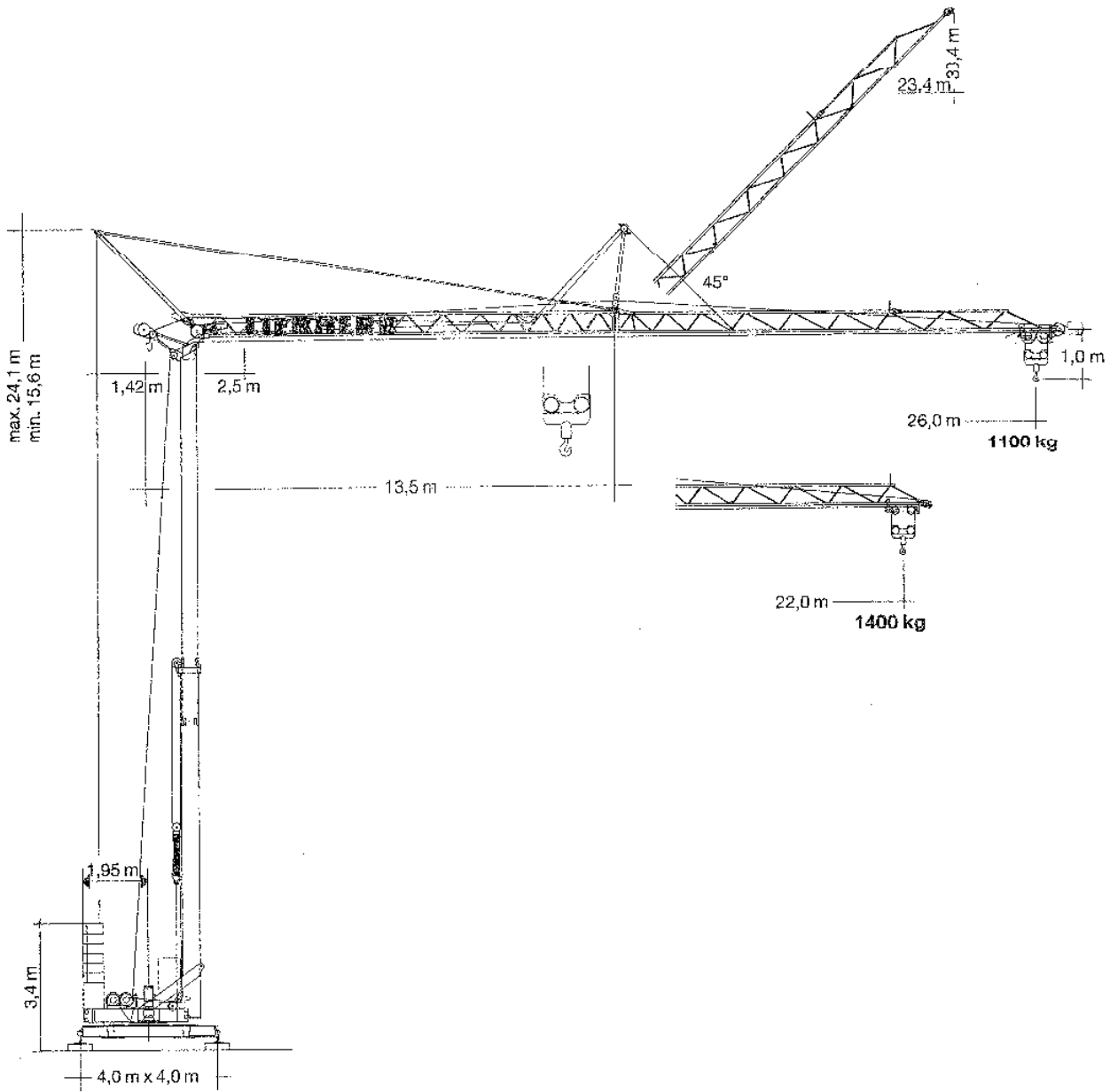
Turmdrehkran 26 K



DIN/FEM

1 . 100

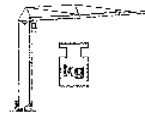
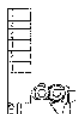
LIEBHERR



26 K

Gewicht

Weight / Poids / Peso / Peso / Pesos

| | | | |
|--|------------|---|----------|
| Zentralballast / Central ballast Lest de base / Zavorra centrale Lastro central / Lastre central | 1080 kg |  | 10000 kg |
|  | r = 1,95 m | 13000 kg | |

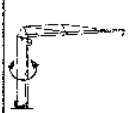
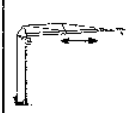

Ausladung und Tragfähigkeit


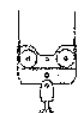
Radius and capacity / Portée et charge / Sbraccio e portata / Alcances y cargas / Alcance e capacidade de carga

| m | m/kg | m/kg | | | | | | | | | | | | | | | |
|------|--------------------|------|------|------|------|------|------|------|------|------|------|------|------|------|------|------|------|
| | | 11,0 | 12,0 | 13,0 | 14,0 | 15,0 | 16,0 | 17,0 | 18,0 | 19,0 | 20,0 | 21,0 | 22,0 | 23,0 | 24,0 | 25,0 | 26,0 |
| 26,0 | 2,5 - 12,4 2500 | 2500 | 2500 | 2370 | 2160 | 1985 | 1830 | 1700 | 1585 | 1480 | 1390 | 1310 | 1235 | 1170 | 1110 | 1100 | 1100 |
| 22,0 | 2,5 - 12,9 2500 | 2500 | 2500 | 2480 | 2270 | 2080 | 1925 | 1790 | 1670 | 1560 | 1460 | 1400 | 1400 | | | | |

Geschwindigkeiten

Speeds / Vitesses / Velocità / Velocidades / Velocidades

| | | |
|---|-----------------------------------|--------------|
|  | U/min 0-0,8 st./min tr./min | 1,5 kW, EDC |
|  | 19,0 / 33,0 m/min | 0,7 / 1,2 kW |
|  | 0-45° ca. 38 sec. | 2,2 kW |

| | Stufe / Step / Cran Marcia / Velocidad Velocidade | kg | m/min |
|---|---|------|-------|
| 11,0 kW (KL)  | 1 | 2500 | 5,0 |
| | 2 | 2500 | 20,0 |
| | 3 | 1300 | 40,0 |
| 11,0 kW (FU)  | 1 | 2500 | 5,0 |
| | 2 | 2500 | 20,0 |
| | 3 | 1800 | 30,0 |
| | 4 | 1300 | 40,0 |

BGL:  2105-0028

| | | |
|--|----|------------------------|
| 400 V | Hz | kVA |
| 28,0 m 4 x 6 mm ² (KL) 4 x 6 mm ² (FU) | 50 | 21,0 (KL) 17,0 (FU) |

Technische Daten

Technical data - Caractéristiques techniques

Caratteristiche tecniche - Características técnicas - Datos técnicos

Aufstellvorgang

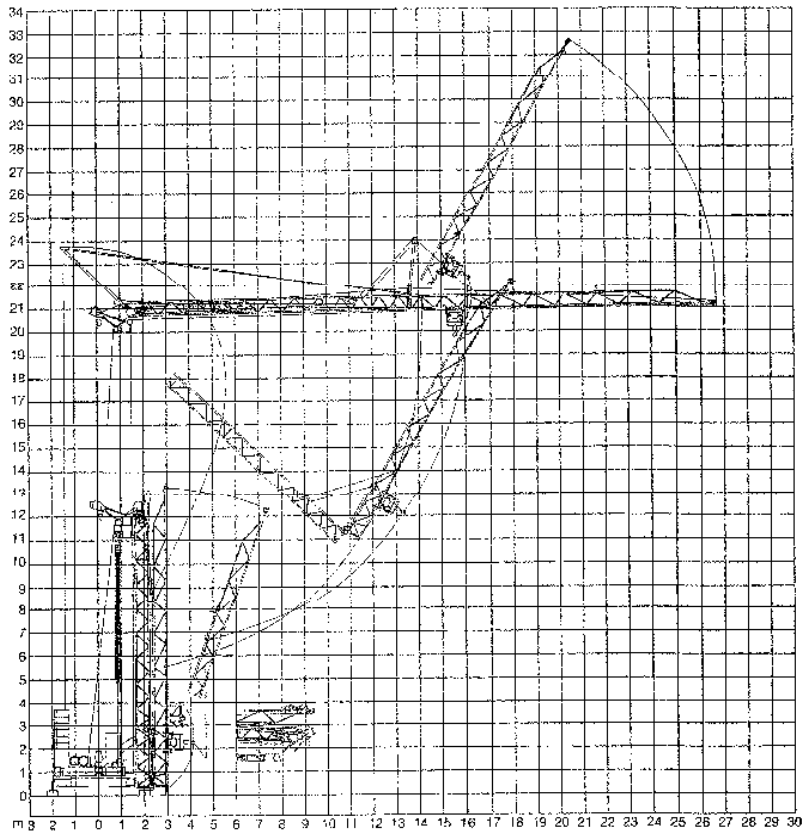
Erection procedure

Déroulement de montage

Procedimento di montaggio

Procedimiento de montaje

Sistema de montagem



Kolli-Liste

Packing List / Liste de colizage / Lista dei celli

Lista de contenido / Lista de embalagem

| Pos. | Anz. | Item | Qty. | L (m) | B (m) | H (m) | kg |
|------|------|---|------|-------|-------|-------|------|
| 1 | 1 | Transportachse vorne Tra 100 KY 2 Road transport axle front / Essieux de transport avant / Asse di trasporto anteriore / Eje delantero para transporte / Eixo de transporte dianteiro | | 3,00 | 1,13 | 0,97 | 660 |
| 2 | 1 | Transportachse hinten Tra 120 GY 1A Road transport axle behind / Essieux de transport arrière / Asse di trasporto posteriore / Eje trasero para transporte / eixo de transporte traseiro | | 1,90 | 2,50 | 1,05 | 1150 |
| 3 | 1 | Kiste mit Seilen und Kleinteilen / Case with ropes and small parts Caisse avec câbles et pièces détachées / Cassa con funi e accessori Caja con cables y piezas sueltas / Caixa contendo cabos e acessórios | | 1,00 | 0,80 | 1,00 | 450 |

120 P - 4028 H1 B3 DIN 15018 / FEM (Section 1) Krangruppe A3 und OENORM T3 • 01.99 / 6

Konstruktionsänderungen vorbehalten! / Subject to alterations!
Sous réserves de modifications! / Si fa riserva di modifiche!
Salvo modificação da construção! / Sujeito a modificaciones!

Printed in Germany.

LIEBHERR-WERK BIBERACH GMBH, Postfach 1663, D-88390 Biberach an der Riß
T (073 51) 41-0, Fax (073 51) 4 12 25, <http://www.lbc.liebherr.de>, E-Mail: info@lbc.liebherr.com